



**FOR LEASE**

**315 - 325 KETTERING RD**

**141,722 SF**

**HIGH POINT, NC**

**MICHAEL JENSEN | 414-260-0577 | MJENSEN@PHOENIXINVESTORS.COM**

**ANTHONY CRIVELLO | 414-982-4810 | ANTHONY@PHOENIXINVESTORS.COM**



**PHOENIX**  
**INVESTORS**

*Opportunity. Execution. Value Creation.*

This document has been prepared by Phoenix Investors for advertising and general information only. Phoenix Investors makes no guarantees, representations, or warranties of any kind, expressed or implied, regarding the information including, but not limited to, warranties of content, accuracy, and reliability.



# PROPERTY HIGHLIGHTS



**4,200-SF OUTSIDE/  
COVERED STORAGE**



**FULLY AIR  
CONDITIONED**



**15 DOCK-HIGH DOORS  
AVAILABLE**



**2 CRANES AVAILABLE  
FOR IMMEDIATE USE**



**AMPLE TRAILER PARKING  
AVAILABLE ON SITE**



# PROPERTY DETAILS

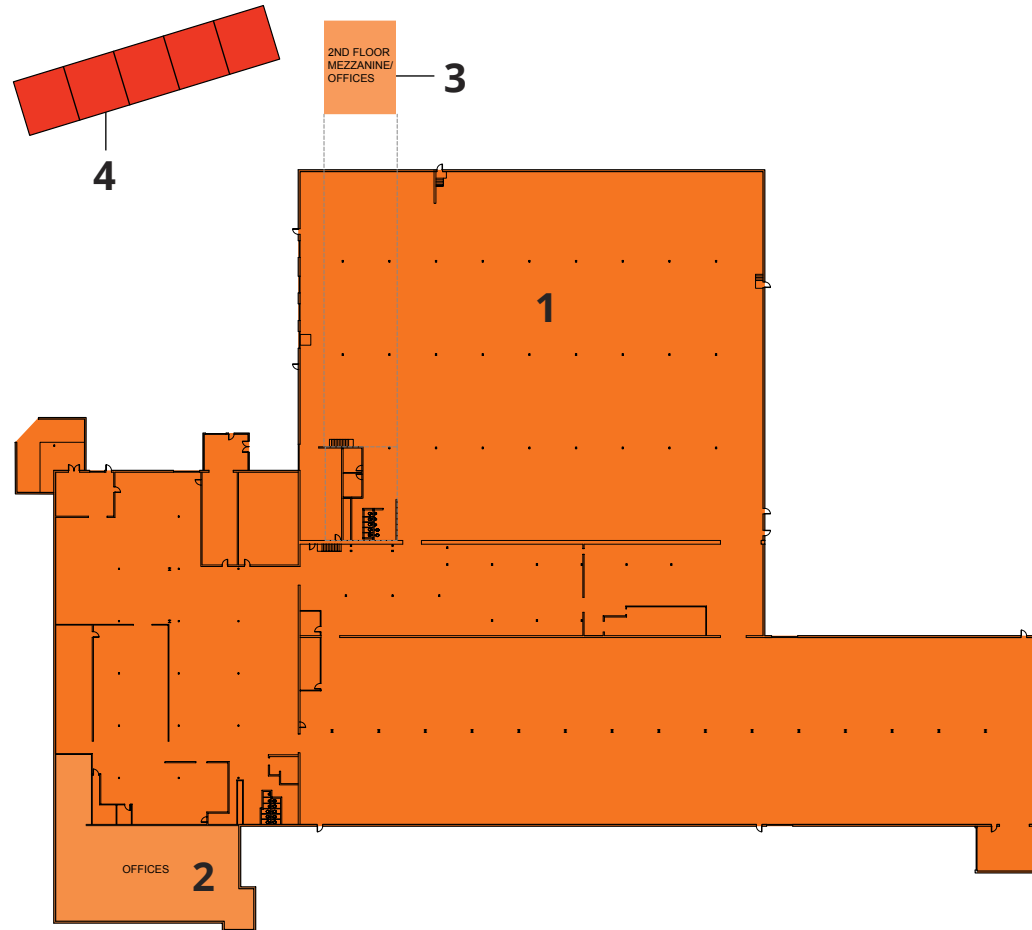
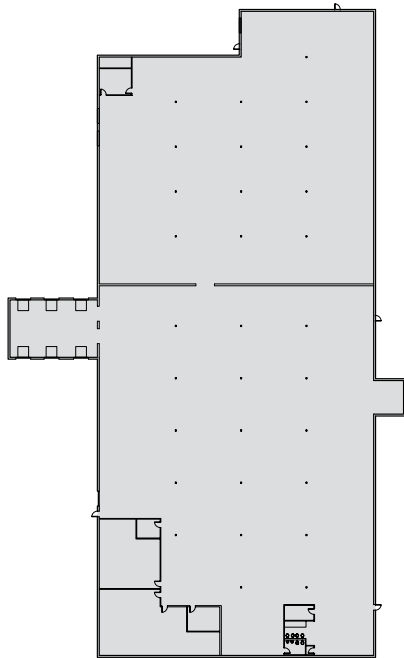
315 - 325 KETTERING RD | HIGH POINT, NC

AVAILABLE SPACE	141,722 SF
WAREHOUSE SPACE	129,318 SF
OFFICE SPACE	8,654 SF
OUTDOOR STORAGE	4,200 SF
DOCKS/LEVELERS	1
DOCK-HIGH DOORS	15
OH GRADE-LEVEL DOORS	10
CRANES	(2) 10-Ton
CLEAR HEIGHT	13' - 30'
ROOF	BUR/Metal/Membrane
FLOORS	6" - 8"
YEAR BUILT	1967
YEAR RENOVATED	1986
FIRE SUPPRESSION	Wet
AIR COMPRESSORS	(2) 300 HP
POWER	2,000 Amps, 480 V, 3-Phase
PARKING	40 Standard   37 Trailer
LAND AREA	11.3 Acres
ZONING	LI - Light Industrial Zone

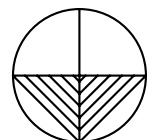


# FLOOR PLAN

315 - 325 KETTERING RD | HIGH POINT, NC

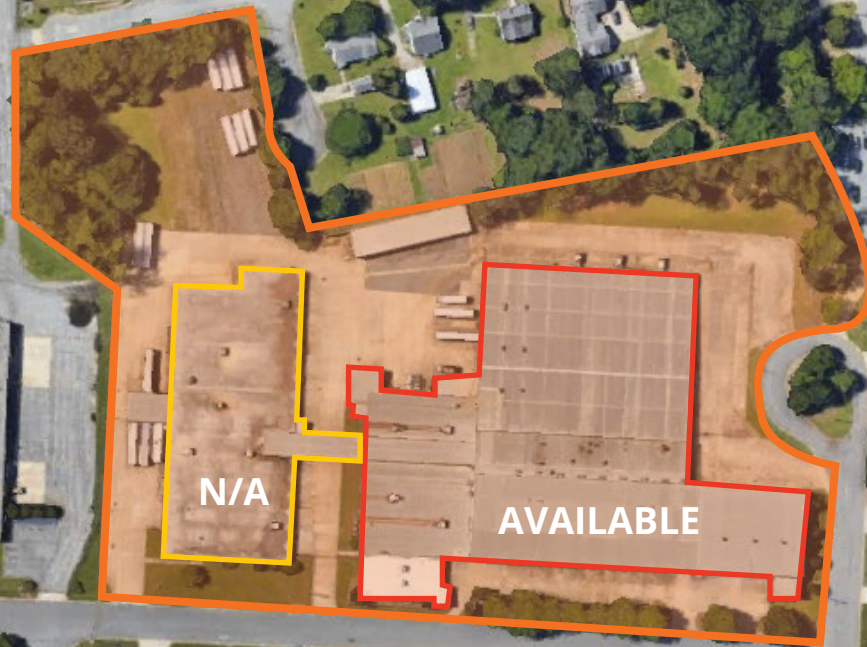


NUMBER	SPACE DESIGNATION	CLEAR HEIGHT	RESTROOMS	OVERHEAD DOORS	SQUARE FEET
1	AVAILABLE WAREHOUSE	13' - 30'	15	10 OH 1 LEVELING DOCK	129,318 SF
2	AVAILABLE OFFICES	DROP CEILING	N/A	N/A	6,271 SF
3	SECOND STORY OFFICE MEZZANINE	10'	N/A	N/A	1,933 SF
<b>TOTAL</b>			<b>15</b>	<b>10 OH 1 LEVELING DOCKS</b>	<b>137,522 SF</b>
4	OUTSIDE/COVERED STORAGE	13' - 16'	N/A	N/A	4,200 SF



# SITE PLAN

315 - 325 KETTERING RD | HIGH POINT, NC



N/A

AVAILABLE



# LOCATION MAP

315 - 325 KETTERING RD | HIGH POINT, NC

I-74	3 MILES
GREENSBORO, NC	17 MILES
WINSTON-SALEM, NC	26 MILES
DURHAM, NC	70 MILES
CHARLOTTE, NC	76 MILES

