

FOR SALE | **45.32 ACRES**
0000 COUNTY RD 2400 | **COFFEYVILLE, KS**

ANTHONY CRIVELLO | 414-982-4810 | ANTHONY@PHOENIXINVESTORS.COM



PHOENIX
INVESTORS

Opportunity. Execution. Value Creation.

This document has been prepared by Phoenix Investors for advertising and general information only. Phoenix Investors makes no guarantees, representations, or warranties of any kind, expressed or implied, regarding the information including, but not limited to, warranties of content, accuracy, and reliability.

PROPERTY DETAILS

0000 COUNTY RD 2400 | COFFEYVILLE, KS

LAND AREA	45.32 Acres
TOPOGRAPHY	Level
SITE CONDITION	Greenfield
PARCEL ID	063-204-18-0-00-01-010.01-0

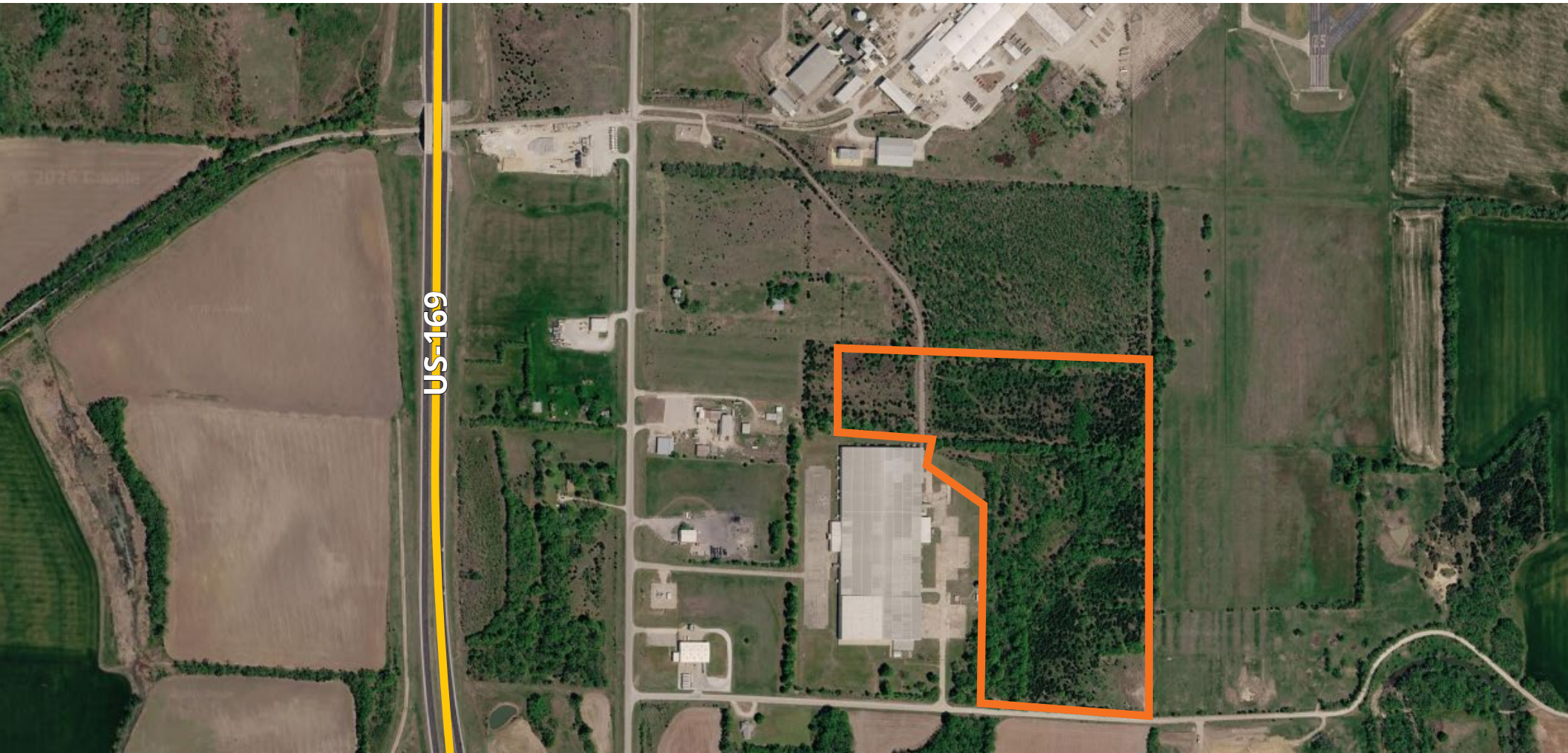
PROPERTY HIGHLIGHTS



IMMEDIATE ACCESS TO US-169



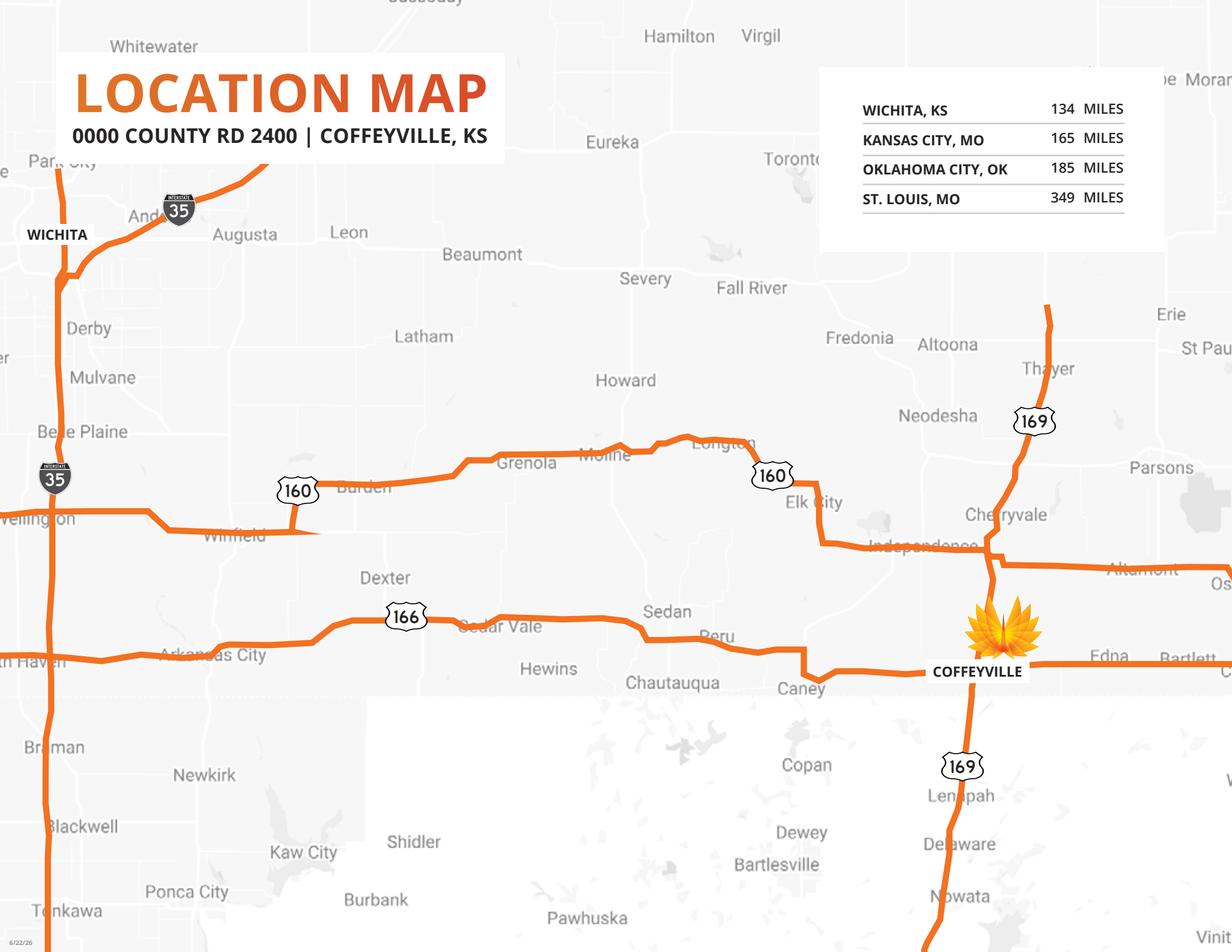
**IDEAL FOR INDUSTRIAL/COMMERCIAL,
TRAILER PARKING, & OUTDOOR STORAGE**



LOCATION MAP

0000 COUNTY RD 2400 | COFFEYVILLE, KS

WICHITA, KS	134 MILES
KANSAS CITY, MO	165 MILES
OKLAHOMA CITY, OK	185 MILES
ST. LOUIS, MO	349 MILES



COFFEYVILLE